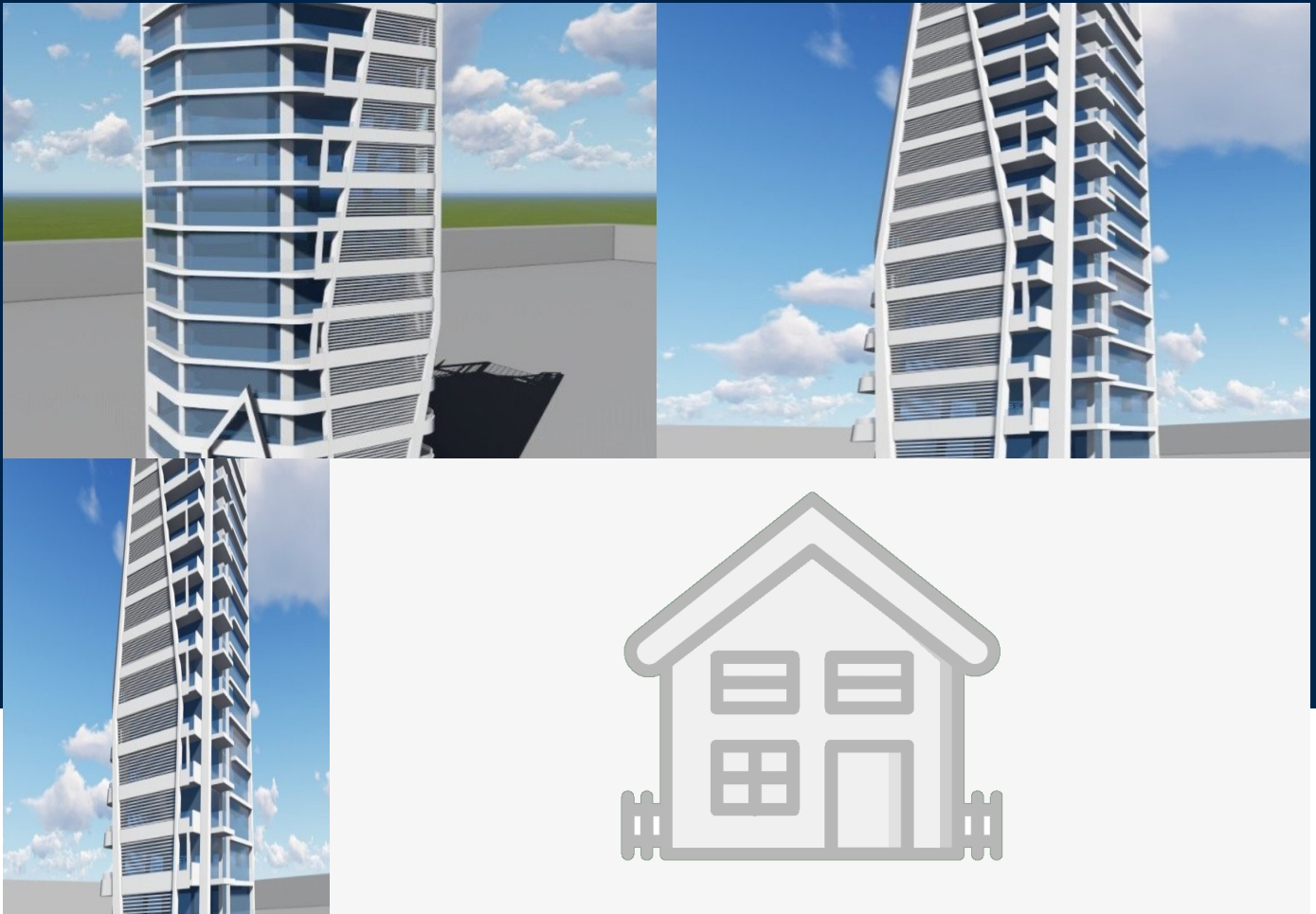


# Office Block

Ta' Xbiex Malta

€22,000/mth.

MLS ID 306052



## Amenities and Features

External Features: General Energy Saving Features  
External Features: General Security System External  
Features: General Wheel Chair Accessible External  
Features: Lift Parking Places: 149 Parking Places



**Benji Psaila**

benji.psaila@maltasothebysrealty.com

**Position:** Head of Sales & Letting

### INTERIOR

**4800 Sq Mt**

### GARAGE

**Yes**

An urban setting of twenty-three story fully detached commercial building in the area of Testaferrata in Gzira close to the promenade and other amenities. The property comprises five levels of enclosed underground parking spaces including a designated parking level for sustainable vehicles, particularly electrical cars and bicycles, a reception area and a 220sqm cafeteria with a green outdoor space serving a wide variety of products at any time of day. The offices are located on...

**Find a home that suits your lifestyle.**

Portomaso Marina, T. (+356) 2010 8077, M. (+356) 9910 8070, E. portomaso@sir.com.mt

Only  
Malta | Sotheby's  
INTERNATIONAL REALTY

**maltasothebysrealty.com**   

Each Office is Independently Owned & Operated